

if
justfit™

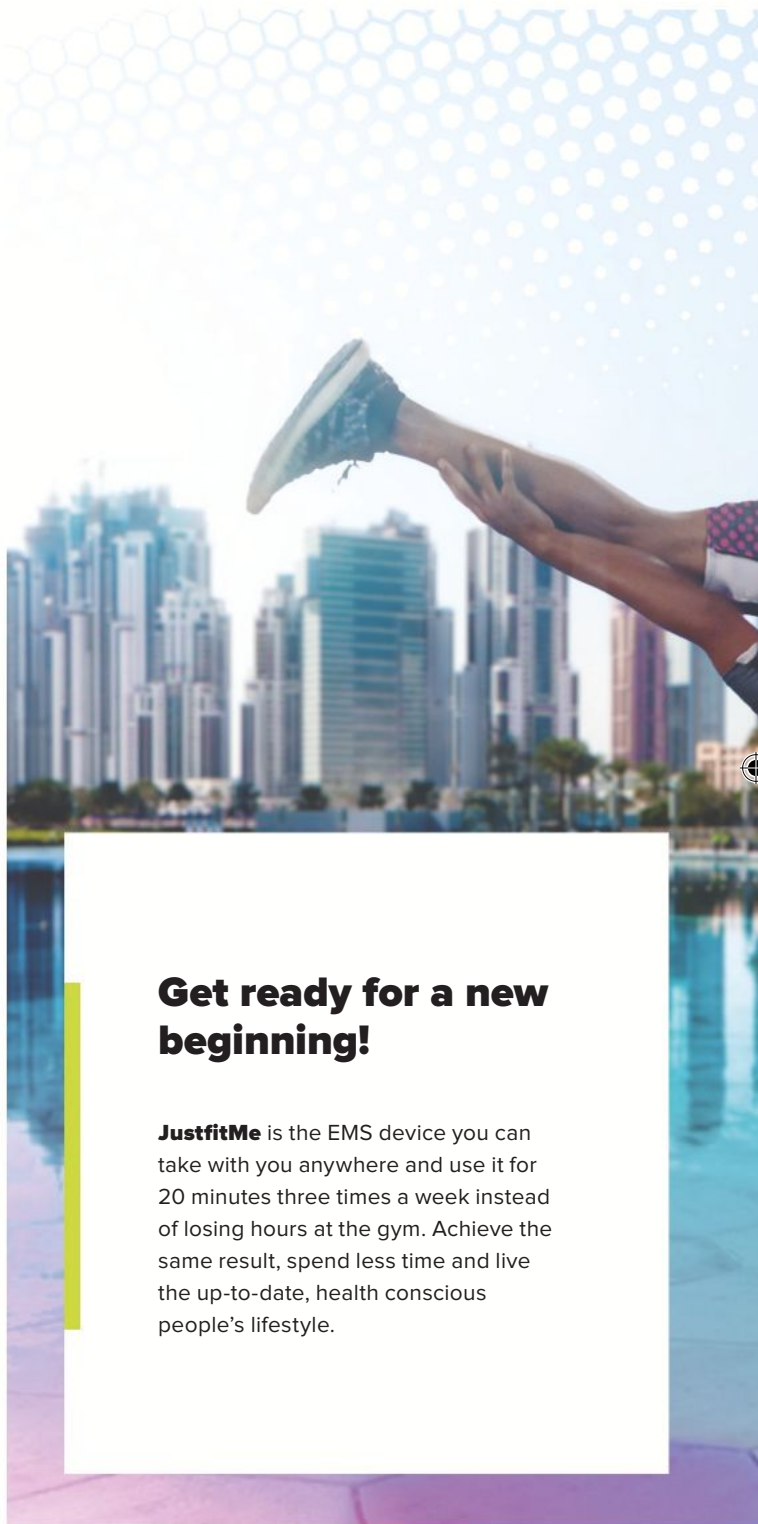
Think of
tomorrow.



JustfitMe

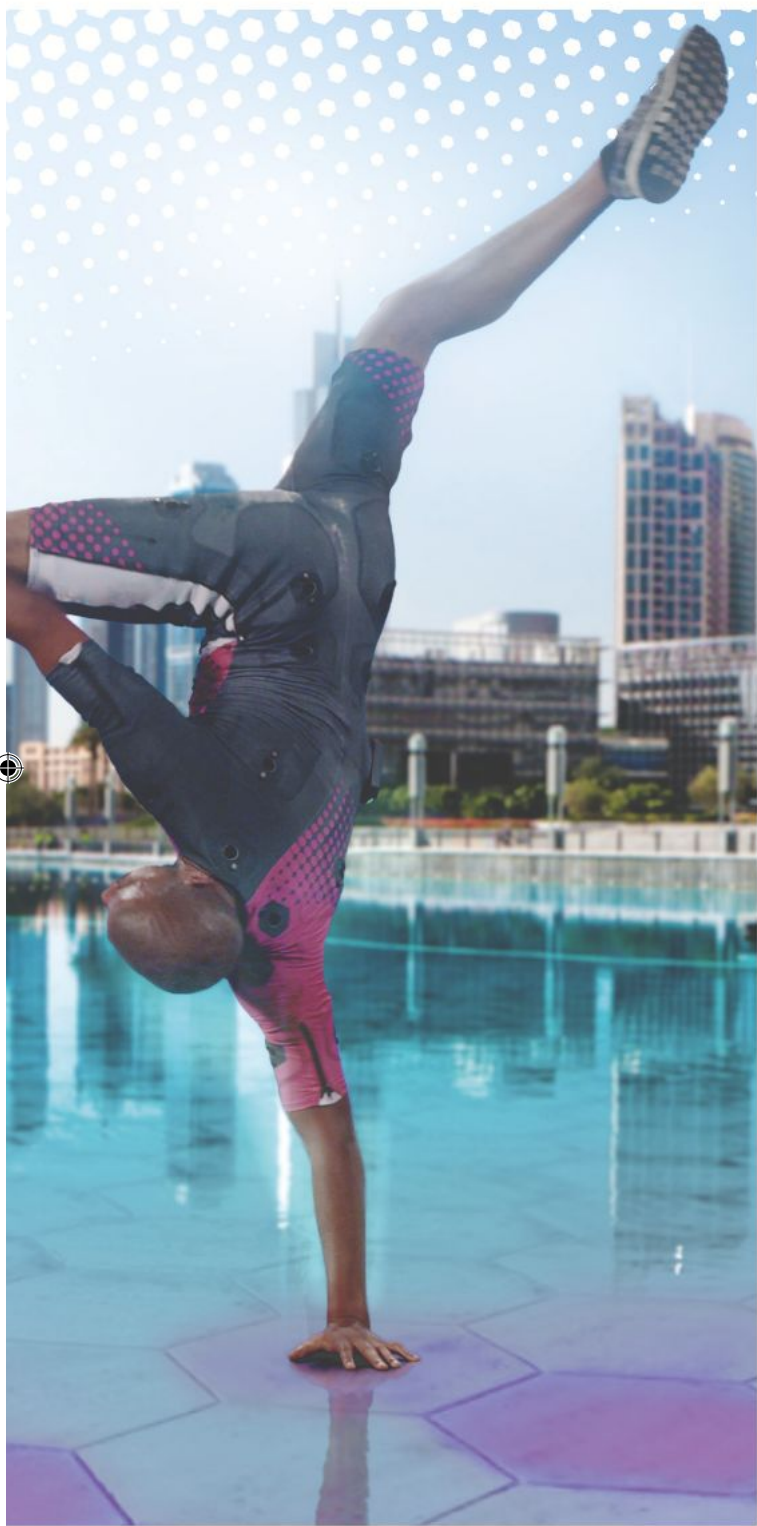
Anytime, anywhere

USER MANUAL



Get ready for a new beginning!

JustfitMe is the EMS device you can take with you anywhere and use it for 20 minutes three times a week instead of losing hours at the gym. Achieve the same result, spend less time and live the up-to-date, health conscious people's lifestyle.





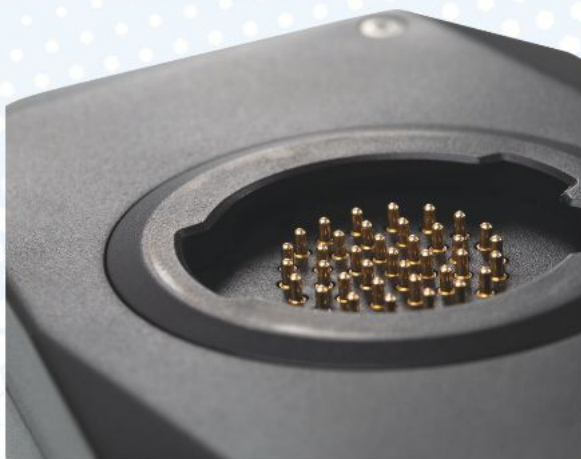
Hybrid suit

Enjoy your stylish, future-inspired hybrid suit during workout. Its flexible and slim-fit design makes sure that it remains in perfect harmony with your body throughout the training. Break all limits in weight loss, increasing muscle mass and endurance. Do it with style!

Control unit

Ultralight case, spectacular design: the **JustfitMe** control unit makes sure that the training program in the JustfitMe app is accomplished. It connects to your training suit with a unique connector.

JustfitMe trains 11 muscle groups at a time. The values can be set in synch at the same time or individually.

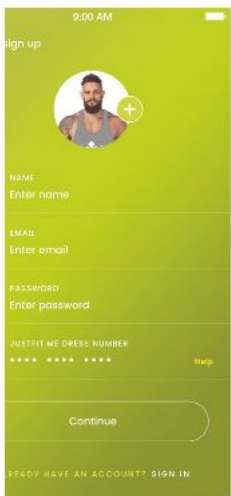


First steps



1 **Download** the JustfitMe app from Google Play or Appstore.

2 Click on **'Sign up'** or sign in with your username and password if you are already registered as a Justfit user. For the login process you have to have internet access. There are some menu points which are active when you are online.



3 If you sign up as a new user please fill out the respective fields and write in the **dress serial number** (serial number of the control unit). You can find it on the warranty card. The format is: **Justfit-xxxxx**.

Please only write the numbers and letters that come after Justfit. (So if your serial number is: Justfit-3f3f4r, write only 3f3f4r to the serial number field).

4 Click on **'Save'**



If you already have an account, log in and choose the 'Settings' icon in the top right corner, and add your control unit serial number.



Within 24 hours we'll activate your account.

Menu

If you enter the main screen you will see 3 lines in the top left corner. This is your 'Menu' icon. Click on '**Menus**':



My profile: you can see your level and daily trainings, you can manage your settings



Friends: you can add friends, respond to a friend request, and connect to Facebook to share your activities and invite friends to use JustfitMe



My Feed: follow your and your friends' activities, and send them a like!



Statistics: is connected with Apple Health and Google Fit where you can see your personal data



Studio finder: shows you the nearest Justfit studio



Training plan: there are many different training plans built-in the app, you just need to set up your fitness level in the personal settings, then choose a plan to meet your goals. Follow the trainings and reach your goals.



Calendar: here you can see your previous and latest training dates.



Preparations

- 1 Please **water the electrodes** in the suit first. Do it from the inside of the suit and be sure that the electrodes on the muscles are completely wet. It can affect the feeling of the strength of the impulse.
- 2 **Click on the control unit** to the side of the suit. If the LED lights light up, the control unit is turned on. The lights also show the battery charge level.

Start workout



Open the Justfit Me app and **login** (internet required)



Go to the Wi-Fi settings of your phone and **connect to your control unit** (Justfit-xxxxx) password: rUqyC8D the 3rd letter is small L.



Click on the **menu** in the top left corner (3 lines)



Choose **workout**



Select **activity**

START WORKOUT

Click on **'Start workout'**. The app will start to search the control unit and if you are already connected to it's Wi-Fi, it will find it.

When it's connected, the training will start automatically.

Settings

There is a **master level** on the main screen. With this you can increase or decrease the power on all muscle groups. Increase the master level for the first settings to 70%.



Then choose a **body part icon**, where you will see all the muscle groups that can be stimulated simultaneously. If you click on one of these you can change the intensity of that specific muscle group. Adjust the intensity on your body parts step by step.



Back

If you would like to adjust more than one at the same time, there is a **'Sync' button** in the bottom right corner. Click on it and select the muscle groups that you want to increase simultaneously, then adjust with + or -.



There is a < icon in the top left corner to step back. Increase the intensity on the muscle groups that you would like to train, then start your workout.



Enjoy your training!



TERMS AND CONDITIONS OF THE WARRANTY

The warranty period is 12 months for the control unit and 6 months for the suit and other parts, commencing from the date of the purchase of the Product (hereinafter defined) under normal use only.

The warranty terms and conditions are applicable from the date of the purchase and the warranty is extended by the time of repair, if the Product is properly stored and used. The warranty time continues from the time of the receipt of the repaired Product. The Customer shall report the problem to the Manufacturer as soon as possible. If the Customer fails to do so, the costs of repair and transportation are charged to the Customer.

In the event of any failure please contact your Distributor. This warranty is only valid with the original invoice or receipt.

The time of repair depends on the equipment part and its failure. In certain cases it can be longer, if the equipment part is not in stock.

If the failure is under the warranty, the equipment parts are repaired or replaced.

Limitations and exceptions of coverage:

Damages, fault, failure, imperfections caused by abuse, tampering, illegal use, negligence, prolonged use or operation.

Damage, fault or failure due to improper transportation, inappropriate storage conditions or materials, improper ventilation, reconfiguration of the Product, movement of the Product.

Damage, fault or failure due to causes beyond Our control including, but not limited to, repairs necessary due to operator negligence, improper installation, damage caused by spillage of foods/liquids, wrong usage of electrical supply and voltage, abnormal voltage, excessive heat, dust, corrosive surroundings, chemical reaction, failure to maintain the Product, failure to operate or use the Product according to instructions, accident, mishandling, misuse, tampering, vandalism, theft, fire, lightning, flood, wind, freezing, power failure, foreign matter entering the Product, inadequate or excess power supply, or unusual atmospheric conditions.

Damage, fault or failure due to alteration or repairs made by anyone other than the Manufacturer, or the use of supplies and accessories other than those manufactured by the Manufacturer.

Any utilization of Product that is inconsistent with either the design of the Product or the way the manufacturer intended the Product to be used.

Normal wear and tear.

Serial number:

Date:

PIN code:

Contact Information: Justfit Technology Kft.

Phone: +36 (70) 666 9988

E-mail: support@justfitart.com

ATTENTION! Please do not remove barcode from the Product items.
The warranty is only applicable with the original barcodes.



www.justfitart.com
info@justfitart.com
+36 70 666 99 88